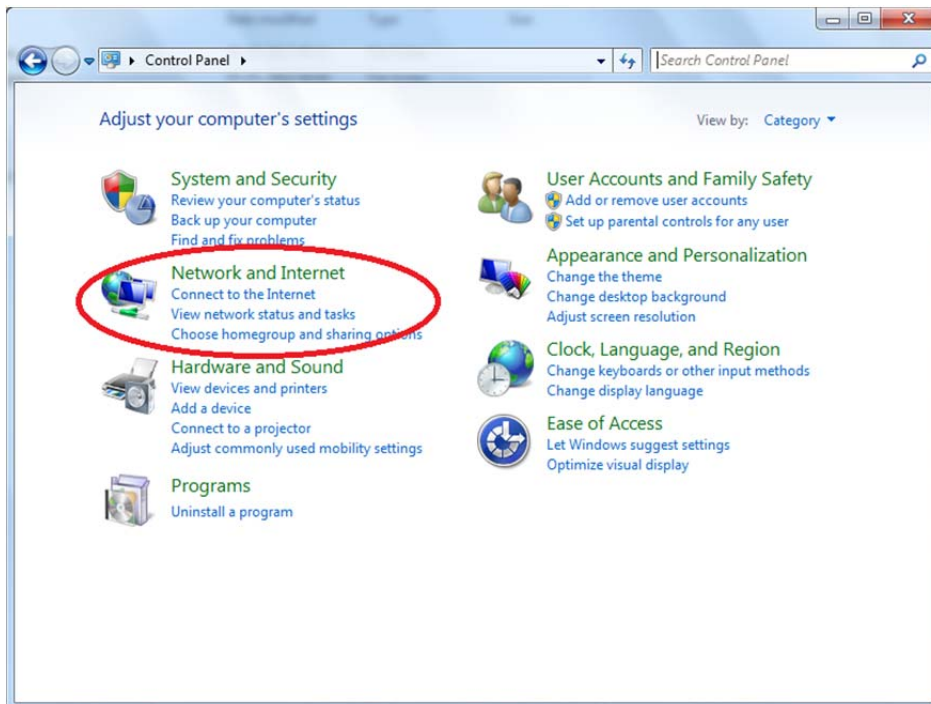




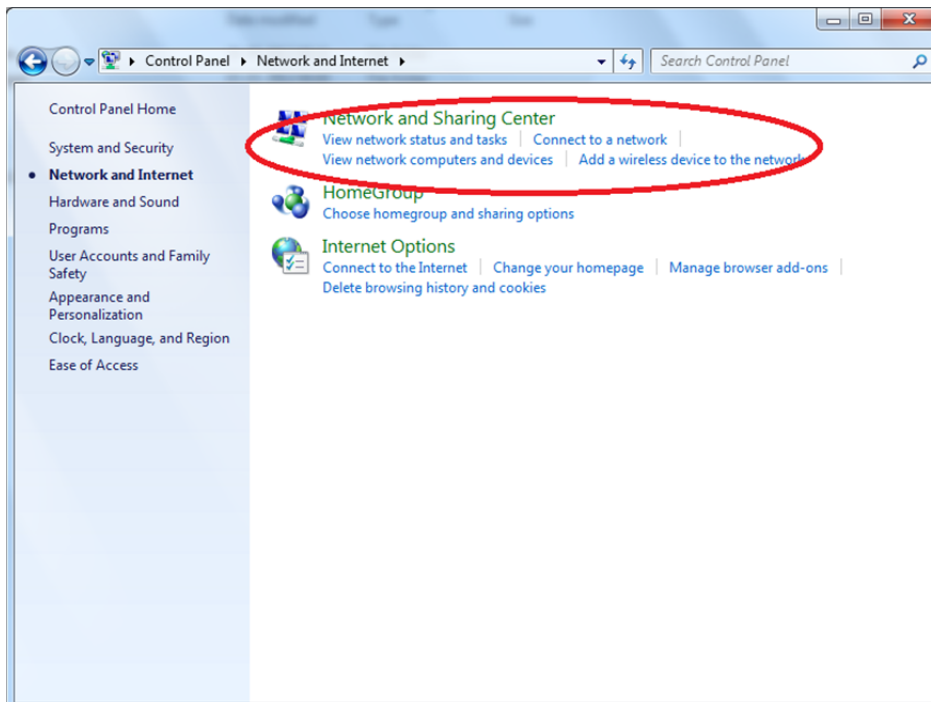
Manual Configuration of wireless network "Eduroam"



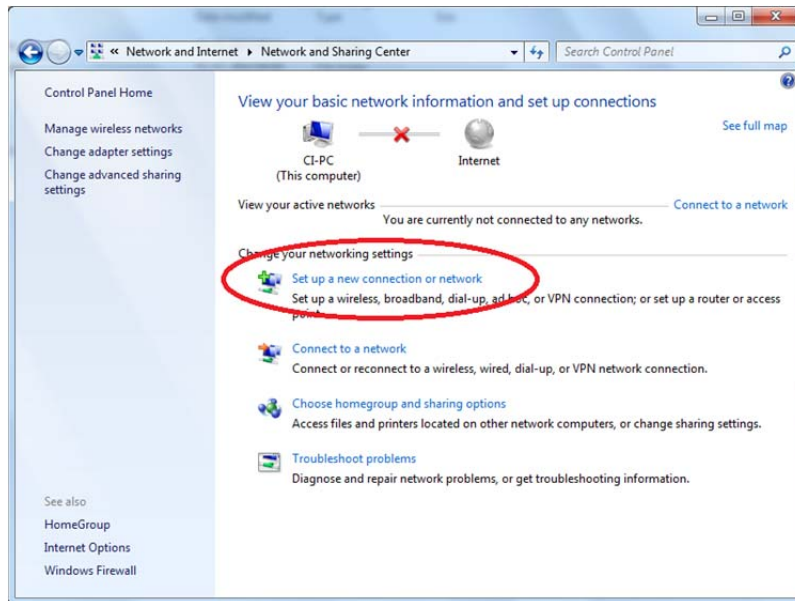
Click the **Start button**, then **Control Panel**;
In **Control Panel**, click **Network and Internet**:



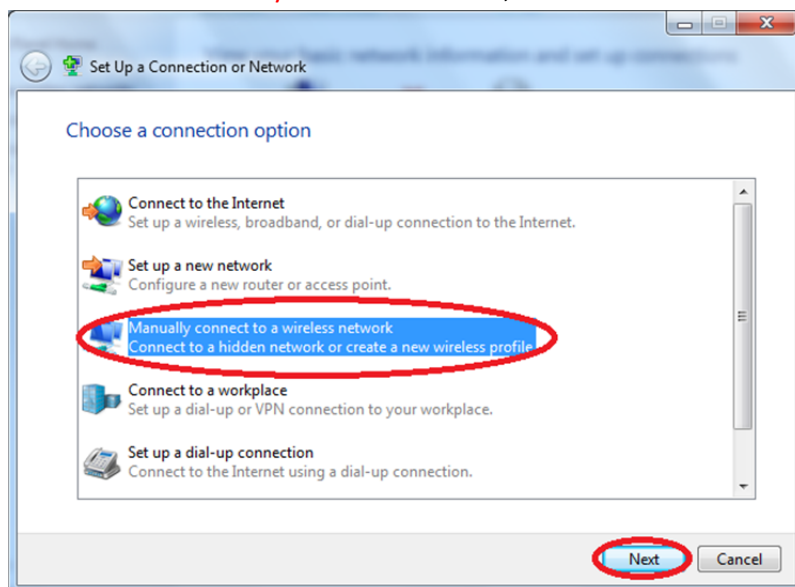
Then click **Network and Sharing Center**:

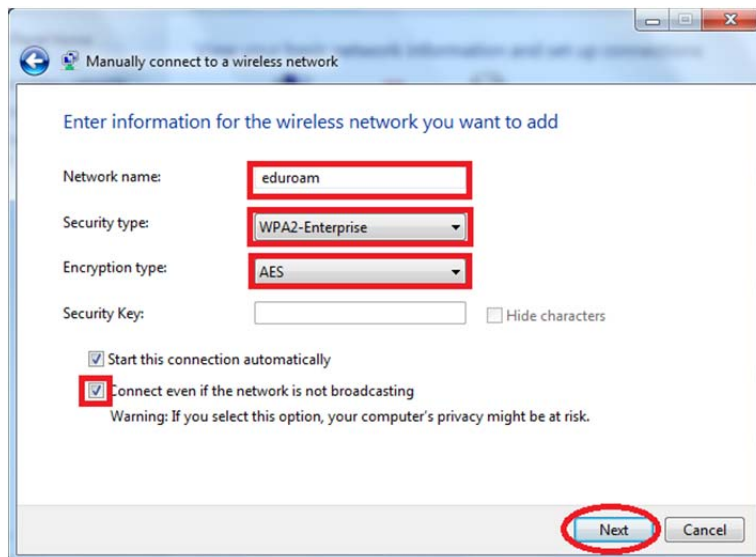


Click **Setup a New Connection or Network**:



Click **Connect Manually Wireless Network**, and then Next:





Fill in:

- Network name: eduroam

Select:

- Security type: WPA2-Enterprise

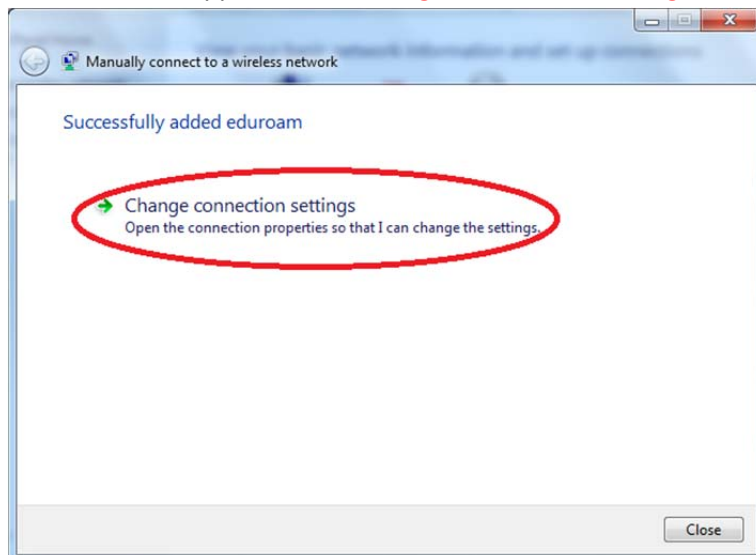
- Encryption type: AES

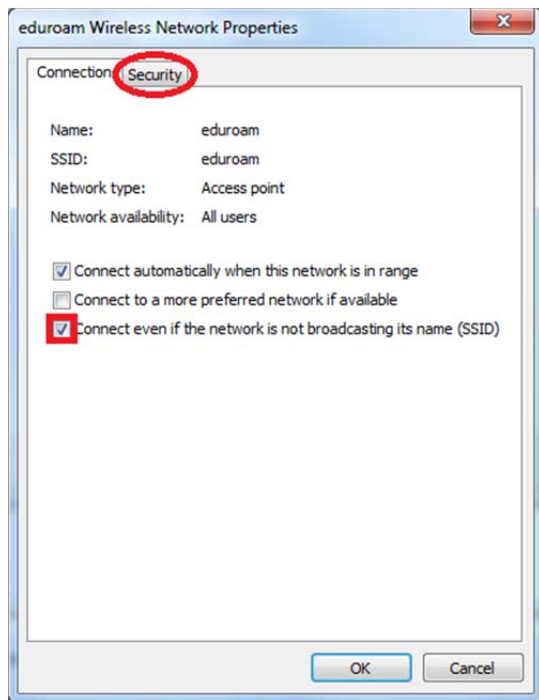
Check the box:

- Connect even if the network is not broadcasting

Click Next.

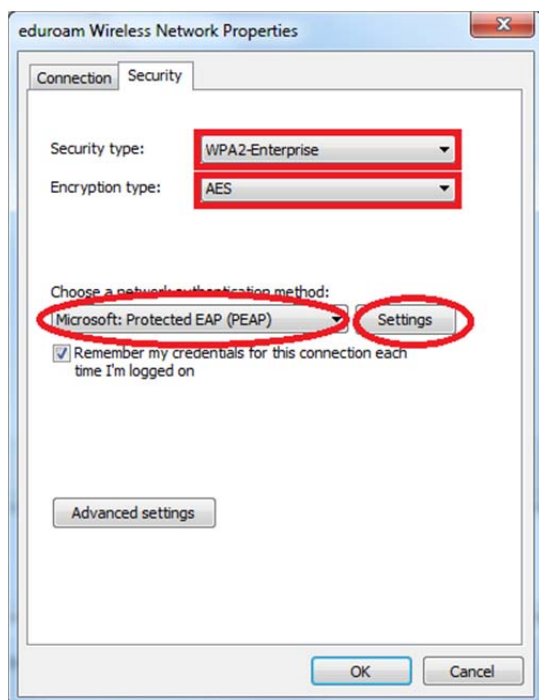
In the box that appears, click **Change Connection Settings**:





Check the box: **Connect even if the network is not broadcasting its name (SSID)**

Click **Security**:

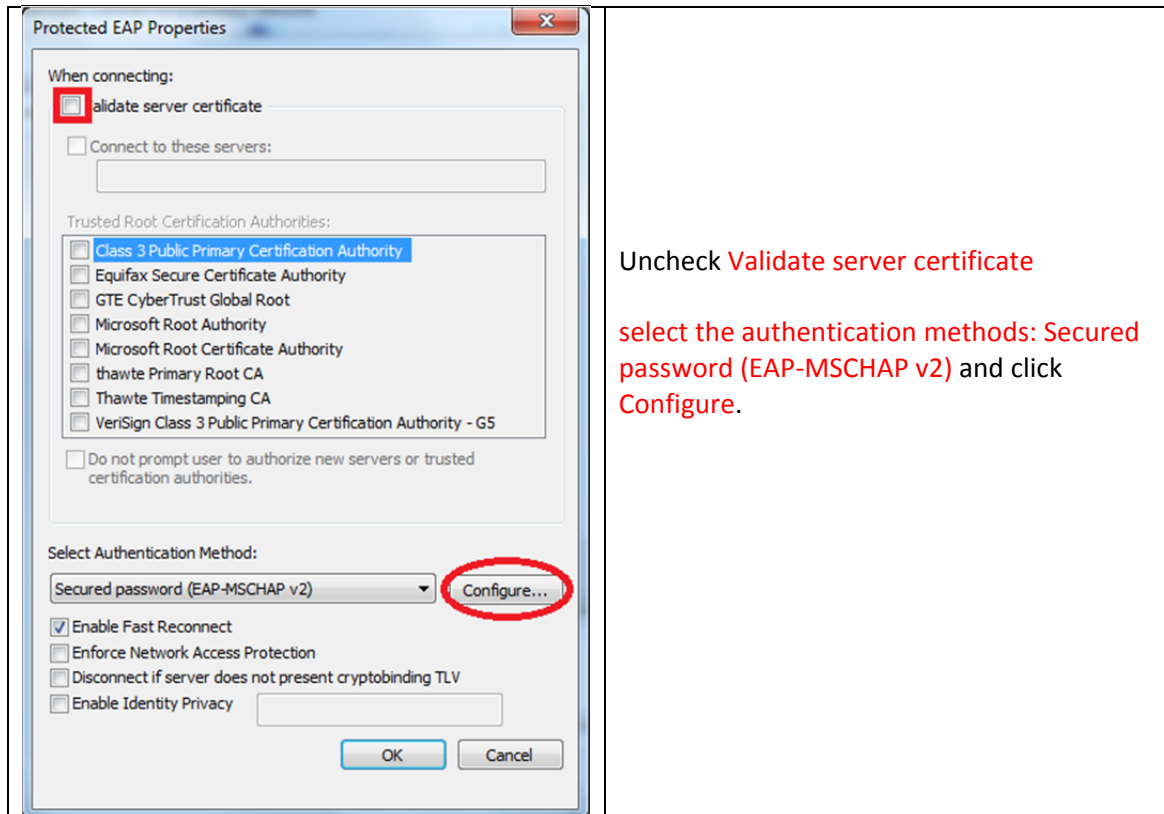


Select the type of security **WPA2-Enterprise**

Choose **AES** encryption type

In the Network Authentication method select **Protected EAP (PEAP)**,

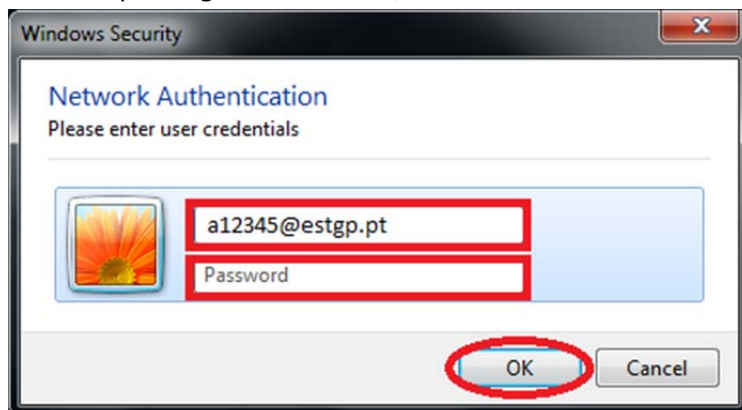
Click on **Settings**



Turn off the box as pictured:

Press OK all times

When requesting authentication, fill in the fields with their respective login and password:



Press OK.

Wait a few seconds it will display the information that is online

